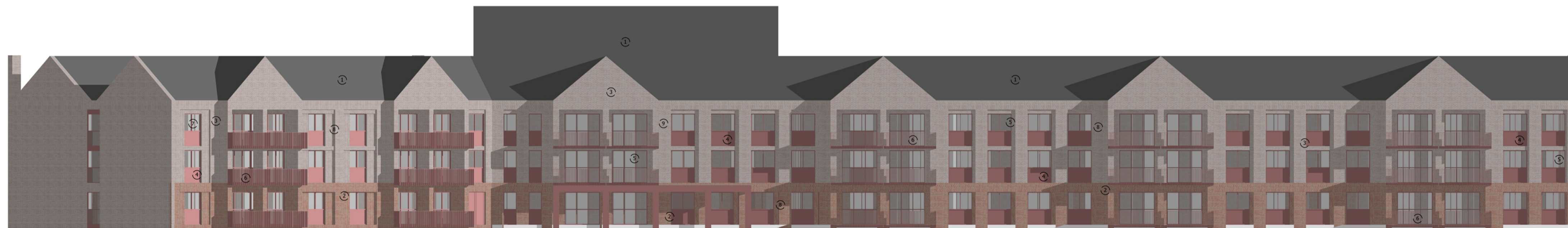




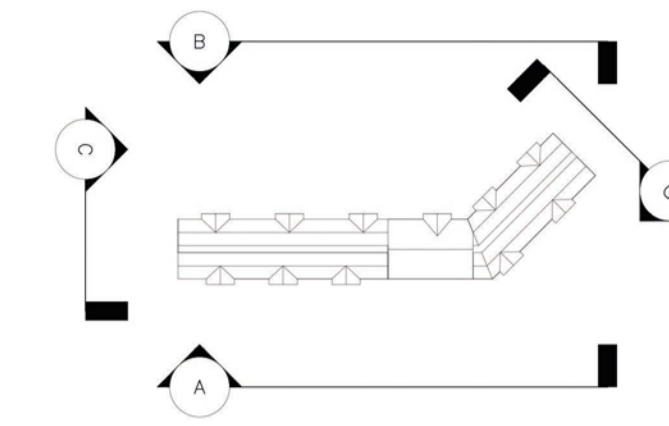
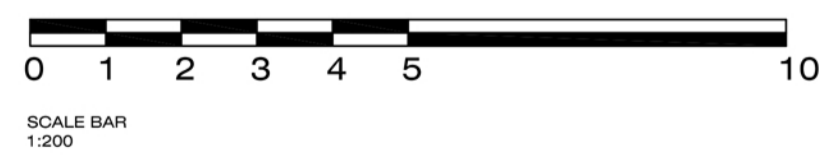
A - FRONT ELEVATION - 1:200



B - REAR ELEVATION 1:200



C - SIDE ELEVATION 1:200



MATERIAL SCHEDULE

1. Slate grey fibre cement tile.
2. Red multi burgundy brick with buff mortar.
3. Light buff brick with buff mortar.
4. Insulated spandrel panel - coral red.
5. UPVC double glazed square profile window/door - coral red.
6. Metal balustrade - coral red.
7. Slatted infill panel - coral red.
8. Feature stack bond brick.
9. Grey UPVC gutter and down pipe.

Notes
 - Copyright in this drawing remains the property of BM3 Architecture Limited.
 - Do not scale this drawing. Work to figured dimensions only.
 - Contractors and consultants are to advise BM3 Architecture Limited of any discrepancies.

Revision	Date	By	Chkd

Client

LOVELL

Project
 NEW COLLEGE
 TELFORD

CIS/5 Element

Drawing
 PROPOSED ELEVATIONS

Drawn by VJ	Checked PJS
Scale 1:200@A1	Dated MAR 22
Job No. 71366	Drawing No. D111
	Revision A

Birmingham Office
 28 Pickford Street, Digbeth, Birmingham, B5 5QH
 T: 0121 633 0000 F: 0121 633 0300 E: design@bm3.co.uk

